



**KRAL ARMS**

**K12**

USER MANUAL

12Ga Semi Automatic Shotgun

**READ CAREFULLY BEFORE USING THIS FIREARM IMPORTANT!**

Do not discard! Keep this manual with your rifle. It should accompany the rifle to any new owner.

[www.kralarms.com](http://www.kralarms.com)



## Firearm Certificate of Title

MODEL \_\_\_\_\_ SERIAL NO: \_\_\_\_\_ PURCHASE DATE \_\_\_\_ \_\_\_\_ \_\_\_\_\_

**PLEASE NOTE: CHANGES MAY BE MADE WITHOUT NOTICE**

### **KRAL K12 SHOTGUN MAINTENANCE**

#### **1) NEVER MAKE CHANGES OR ALTERATIONS TO YOUR SHOTGUN**

Regular care and cleaning of your firearm is key to its proper function and reliability. Always make sure that the firearm is UNLOADED. Before you leave the range and check it again before you start the cleaning process.

## **CONGRATULATIONS!**

You have a KRAL K12 semi-auto shotgun now! K12 Shotgun has an innovative design and produced with high quality materials. K12 will be the long-serving product with your regular care and proper cartridge use. Be aware of instructions and warnings to have high performance and reliability. K12 is reliable and safe if it's not used inattentive and irresponsible. PLEASE NOTE that you are using a firearm; always follow all safety rules and be aware that it is your responsibility to share your knowledge, and educate others in the safe use of this firearm. Before firing a cartridge, learn the parts of your firearm and understand how it operates.

## Technical Specifications

|  |                      |
|--|----------------------|
| Model                                      | KRAL - K12           |
| Caliber                                    | 12                   |
| Working System                             | Semi-auto Gas system |
| Empty Weight                               | 3,8 Kg.              |
| OVERALL LENGHT(TACTICAL STOCK OPEN-CLOSED) | 101 cm. - 93 cm.     |
| BARREL LENGHT                              | 47 / 51 cm.          |
| MAGAZINE WEIGHT(EMPTY)                     | 540 gr.              |
| CAPACITY OF MAGAZINE                       | 2/5/10 Cartridge     |

## **FIREARM USERS' RESPONSIBILITIES**

The constitution of the republic of Turkey provides you right and honor to have a firearm. Conform to this privilege carefully and respectfully. Be aware that, as an owner of a firearm, you are responsible for ensuring your own safety and that of your shooting partners, observers, and the environment. And that is the shotgun safety rules which You must always carefully read, fully understand and follow.

### **DISCLAIMER**

This firearm is sold with the understanding that the buyer will obey all applicable domestic laws, Therefore Kral arms is NOT RESPONSIBLE FOR DEATH OR INJURIES CAUSED BY INCORRECT OR IRRESPONSIBLE USE.

Kral Arms does not accept ANY RESPONSIBILITIES for DAMAGE DUE TO THE FOLLOWING CAUSES:

1. INCORRECT OR IRRESPONSIBLE USE OF THE FIREARM.
2. USE OF INCORRECT GAUGE AMMUNITION OR RELOADED, DAMAGED OR INPROPER CARTRIDGES,3. INSUFFICIENT AND/OR INCORRECT MAINTENANCE OR CLEANING WHICH CAUSES TO DAMAGE OR WEAR.
4. SALE CONTRARY TO APPLICABLE LAWS AND REGULATIONS
5. CHANGING OR CONVERSION OF THE FIREARM'S ORIGINAL DESIGN, OPERATING MECHANISM, ACCESSORIES OR MECHANICALS
6. CARELESS OR DANGEROUS USE, OR CRIMINAL USE
7. USING THE FIREARM WITHOUT FIRST READING, UNDERSTANDING, AND FOLLOWING ALL SAFETY RULES
8. ANY OTHER USE OR ACTION THAT IS BEYOND THE DIRECT CONTROL OF THE MANUFACTURER

## **IMPORTANT WARNING**

**IMPORTANT WARNING** :It is a necessity to have education from authorized PERSON or INSTITUTIONS for use of a firearm.

**IMPORTANT WARNING** :Violation of safety rules for firearms may cause SERIOUS INJURIES, DEATH OR MATERIAL DAMAGE.

- 1) **Read the instructions booklet completely before using your firearm.**
  
- 2) **Always be aware of the handling and functional characteristics of your firearms.**
  
- 3) **ALWAYS UNLOAD YOUR FIREARM WHEN NOT IN USE (REMOVE THE MAGAZINE FROM THE FIREARM AND REMOVE ALL CARTRIDGES FROM THE MAGAZINES AND CHAMBER).**
  - When stored or not in use, firearms should always be unloaded and move the safety lever to the WHITE position to block the trigger of your firearm.
  - Always remove the magazine and inspect the chamber to ensure your firearm is unloaded:

### **3) Always remove the magazine and inspect the chamber to ensure your firearm is unloaded:**

- 1) After shooting
- 2) Before racking or after picking up the firearm
- 3) Before putting the gun into its case
  
- 4) Any time you are not using your firearm
- 5) Before handing your gun to anyone else, remove all cartridges from magazine and chamber.

### **NEVER**

- Do not leave a loaded weapon leaned to a surface, uncontrolled or alone
- Even if you have used the latest firearm, don't assume that the same weapon was empty.  
Always make sure there is no cartridge.
- Do not put the cartridge into the chamber until you are ready to shoot.
- You should not carry the firearm with a real cartridge (full) in the chamber.
- Never give a firearm to someone else if the mechanism behind the chamber is not open or you are not sure that firearm empty; don't take the gun from someone else.
- Do not carry a loaded weapon in an open position or in a carrying case.
- Do not give your firearm to another person.

**4) KEEP YOUR FINGER AWAY FROM THE TRIGGER UNTIL READY TO SHOOT:** While holding your shotgun make sure your finger is on the trigger guard and on the side of the gun.

### **NEVER:**

- Do not touch the trigger until the firearm ready to shoot.
- Do not make jokes with firearm.
- Do not trust the safety lock. Mechanical safety locks are never perfect on any weapon they may be eroded and become unusable.
- Do not neglect to use all firearms in accordance with safety regulations.

**5) ALWAYS KEEP YOUR FIREARM POINTED IN A SAFE DIRECTION.** A safe direction is the direction which you or someone else will not be injured or damaged if the weapon unintentionally fires. Use extreme caution when loading or unloading your weapon. When you are carrying a weapon, always assume it is loaded or ready to fire, even if you think the weapon is empty. The recommended weapon carrying position is the position where the safety switch is closed (pointing to the white dot).

**NEVER :**

- Do not point your gun at anything you do not want to shoot.
- Alcohol, drugs, etc. , which cause impairments in your mentally and physical abilities. Do not use firearms while you are under the influence of substance use.
- Do not point your firearm or go hunting in situations which you are too tired and exhausted to use the rifle safely
- Do not use firearm if you have a disease or condition that reduces your judgment ability, which may cause inconvenience to the safety of yourself or others.

**6) ALWAYS USE PROPER AMMUNITION :** All firearms are marketed foreseeing the use of a certain caliber ammunition. Use only ammunition recommended by the manufacturer. Always ensure that you have the correct ammunition according to the manufacturer's advice before you load your weapon. Use of improperly refilled or incorrect ammunition may result death or injury. This will also take your firearm out of warranty and may damage your firearm.

**NEVER :**

- Do not shoot until you are sure that your ammunition is suitable for your weapon.
- Do not use hand refills, non-standard or refilled cartridges.
- Do not shoot with the cartridge above the industrial standard pressure specification.
- Do not use old, dirty or damaged cartridges.



## **7) KEEP YOUR WEAPON IN A SAFE PLACE THAT CANNOT BE USED BY OTHER INDIVIDUALS OR UNAUTHORIZED**

**ACCESS :** In addition to the locking apparatus which can be attached to the firearm itself for the storage of the firearm itself for the storage of the firearm, there are a variety of storage equipment that will allow the firearm to be stored in a separate location. Each individual should consider his or her own circumstances and ensure the highest level of safety and security in maintaining the weapon. For this purpose, metal firearm cabinets with front glazing or on open shelf are recommended. Shotgun-mounted mechanical safety systems may not be sufficient. Safety systems should not be used as an alternative to safe shotgun use and all shotgun safety rules. You must also keep your ammunition in a separate location from the weapon and locked.

### **NEVER :**

- Do not keep the gun loaded
- Do not leave the gun within the reach of other unauthorized persons.
- Do not allow individuals who do not know or comply with the appropriate shotgun safety rules to access the shotgun.
- Do not leave the gun in places such as beds, drawers or cupboards that are accessible to children or individuals who is not authorized to use weapons.
- Do not allow children under the age of 18 to reach any firearm without close supervision or without the necessary firearm safety training.

## **8) Obey the laws on purchasing, HOLDING, carrying AND USE**

### **NEVER :**

- Do not damage any public and personal property by using it as a target.

### 9) **Always be aware of what is exist behind your target :**

Before you pull the trigger, make sure about your target and what is behind it. Shoot only in proprietary areas such as shooting ranges or areas with a reliable background, such as slopes, banquets. Also be aware of how far these pellets can go if you miss the target or bounce the pellets.

#### **NEVER :**

- Do not shoot in the direction of people.
- Do not shoot into a sound, movement or instant color reflection which you do not know.
- Do not shoot directly into the sky or with an extreme elevation angle. In this way, firing into the air can lead to far greater distances, causing others to accidentally injure or die.

### 10) **ALWAYS wear MATERIALS TO PROTECT YOUR EYE, EAR AND BODY:**

Gas and other residual substance from gun firing can cause injury, so it is very important that you use materials to protect your auditory and visual limbs. Also, wear bright orange materials that allow you to be noticed by others within an area of at least 650 square meters.

**NEVER** Do not fire your firearm in poorly ventilated areas.

**Important Warning:** Shooting your firearm in NON-ventilated areas, You can be exposed to the chemical effect while you are cleaning your firearm or touching ammunition with hand. Lead and lead derivative materials; disabled births, reproductive disorders, cancer, or other serious diseases. Always ventilate your area enoughly and wash your hands and other contacting parts every use which you can be exposed to the chemical effect of the lead.

**11) IF YOUR FIREARM DOES NOT FIRE AFTER PULLING THE TRIGGER: USE EXTRA CAUTION**

When you pull the trigger and it doesn't shoot first STOP! Keep the firearm pointed in a safe direction. Keep your face away from the area where the empty shell will exit from the gun, turn off the safety (pointing to the white dot) carefully open the mechanism, unload the gun and safely get rid of from the unexploded shell. Never forget that there is a shell in the chamber, your firearm is loaded and ready to fire. Assume that the firearm is able to fire at any time, even if you tried to fire it but not fired.

**12) ALWAYS TREAT YOUR FIREARM AS IF IT IS LOADED, EVEN WHEN THE SAFETY IS ON.**

The weapon is a mechanical tool and is not impeccable and is subject to abrasion and tear over time. Always keep your finger off the trigger when loading or unloading the weapon. If the safety system of the firearm breaks down for any reason, it may be shoots unintentionally. In such a case like this, unload your weapon immediately, never use it. Contact KRAL Arms. In this way, your weapon can be examined and repaired by a qualified master.

KRAL Arms'la irtibata geçin. Bu sayede silahınız yetkili bir usta tarafından incelemeye alınıp tamir edilebilir

**DON'T FORGET! ANY SAFETY SYSTEM OF ANY FIREARM TYPE ISN'T COMPLETELY RELIABLE. WHEN USING YOUR FIREARM, ALWAYS THINK THAT YOUR WEAPON IS FULL AND TREAT LIKE THAT!**

**13) ALWAYS STORE YOUR WEAPON WITH THE MECHANICAL AND STRUCTURAL FORMATION WHEN YOU PURCHASE:**

This shotgun is manufactured under certain manufacturer-specific instructions and under no circumstances should any modification or correction be made to the weapon. The replacement of the trigger, mechanical parts and safety systems or the use of products other than the products delivered in the original box of the rifle is NOT RECOMMENDED by the manufacturer, and such modifications may endanger yourself and others; death or injury. Any replacement performed on the shotgun will also void the factory warranty. Just like other mechanical tools, the shotgun is subject to wear and tear over time. The shotgun must be maintained periodically to ensure maximum performance and safety. You must regularly clean and lubricate your weapon to maintain its functionality, effectiveness, safety and reliability. Make sure the gun is empty before cleaning or lubricating your weapon. If your weapon needs repair for any reason, contact KRAL Arms for a registered service provider. If you have your shotgun repaired by an unauthorized person, the manufacturer's warranty will expire.

**NEVER :**

- Do not add, rectificate or modify the shotgun other than as specified by the manufacturer.

**IMPORTANT WARNING:** This firearm is designed for wholesome usage in the original state of the manufacturer. On the Firearm after leave the control of manufacturer cannot be responsible or cannot accept legal liability for any replacement. This definition, KRAL ARMS SAN. by trading company covers any additional or accessories that are not marketed. Specifically after sales, changes on the firearms are absolutely disclaimed by our company's directions and are not approved by our company. Do not risk others or yourself by making changes on the firearm.

**14) ENSURE THE BARREL IS NOT PLUGGED OR OBSTRUCTED BEFORE YOU LOAD YOUR GUN.**

The barrel should not have any residue from bore cleaning solvent or oil, or any other foreign material inside the bore, chamber or choke. If the barrel is blocked or otherwise obstructed, even partially, this may cause bulging and/or a breech explosion and/or a split barrel. If you feel a strange recoil or the report sounds unusually loud or soft STOP SHOOTING IMMEDIATELY and check the barrel for obstructions and bulges.

**NEVER :**

- NEVER try to clear an obstruction in your barrel by firing another cartridge!

## **SERIAL NUMBER**

The serial number is engraved on the firearm in several places. Every firearm has a unique number. This number is used for legal and warranty matters. Owners should note and store the serial numbers of all of your firearms in a secure location away from the firearms.

### **Loading your firearm:**

- 1) Point the muzzle in a safe direction. A safe direction is the direction in which the firearm will not cause any injury or death, even if the shotgun is unintentionally fire. Always make sure that the chamber is empty.
- 2) When the magazine is empty, the mechanism stopper keeps the mechanism open. To pull out the empty magazine, press the magazine release latch and replace the empty magazine with the full magazine. Remember to use the ammunition recommended by the manufacturer.
- 3) Push down the mechanism stopper. This will release the mechanism and allow the mechanism to drive the bullet into the chamber.

## **YOUR FIREARM IS FULL AND READY FOR SHOOTING NOW**

**WARNING :** IMMEDIATELY UNLOAD YOUR SHOTGUN AFTER EVERY SHOOTING.

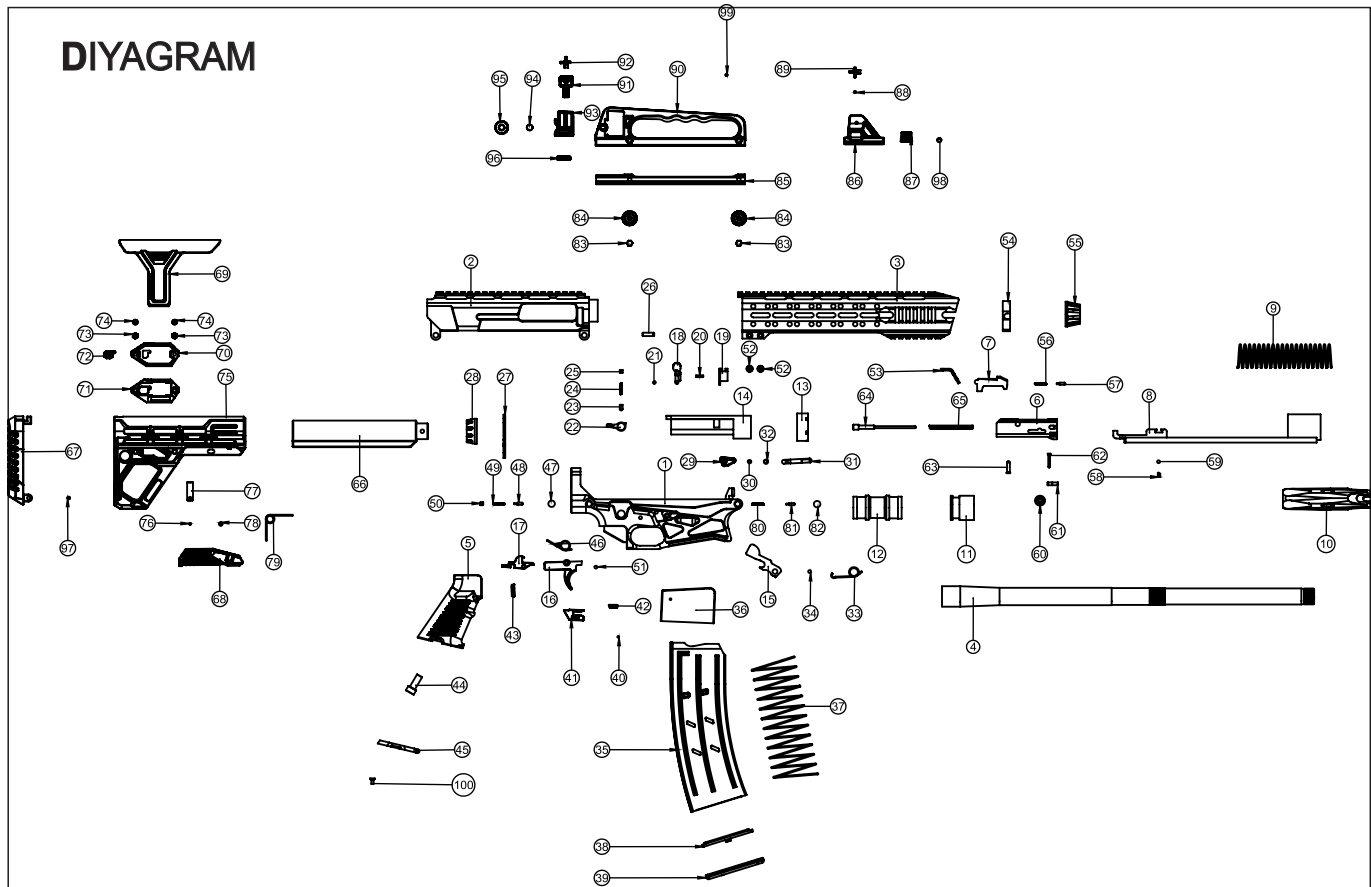
## **K12 UNLOADING**

1. Point your gun in a safe direction. Please note that a safe direction is the direction in which the firearm will not cause any injury or death, even in the event of unintentional firing.
2. Move your fingers away from the trigger and pull out the magazine.
3. Pull and release the cocking lever several times to ensure that the chamber is empty. While doing this, observe whether a full shell or an empty shell has left from the chamber. Pull the cocking lever back fully and use the mechanism stop to lock the mechanism while it is back.
4. Make sure that the last shell in the chamber has been unloaded or thrown out. Visually and physically check the chamber and magazine to ensure that the shotgun is completely unloaded. Put your index finger to the chamber and physically inspect the chamber for a shell.

### **Mobile Shock Warning**

**NEVER BEND DIRECTLY TO THE MUZZLE WHICH TAKE NO NOTICE OF THE SAFETY RULES, OR DO NOT CHANGE SHOCK WHEN FIREARM IS LOADED. ABSOLUTELY DO NOT FIRE WHEN THE MOBILE SHOCK DOES NOT FIT COMPLETELY AND TIGHTLY TO THE UNIT OF THE GROOVE, DO NOT SHOOT IF SHOCK OR BARREL GROOVE CORRUPTION. OTHERWISE, BARREL DAMAGES. MOBILE SHOCK WHICH NOT FITTED THE BARREL WELL CAN CAUSE DEATH, INJURY OR OTHER DAMAGES. DO NOT SHOOT WITHOUT MOBILE SHOCK IN THE MUZZLE. IN SUCH A CASE, IT WILL BE UNPREDICTABLE HOW THE PELLETS WILL DISPERSE. IN ADDITION TO THIS, GROOVE WILL BE CORRUPTED WHICH IS INSIDE OF THE BARREL. NO SHOCK WILL BE ATTACHED AND THE REPAIR WILL BE VERY EXPENSIVE FOR YOU.**

# DIYAGRAM



## DIAGRAM LIST

|                              |                                       |  |   |
|------------------------------|---------------------------------------|--|---|
| 1 Lower Receiver             | 27 Rear Belting                       | 53 Front Belting                           | 79 Telescopic Stock Latch Spring                  |
| 2 Upper Receiver             | 28 Stock Bushing                      | 54 Handguard Cap                           | 80 Frontier Disassemble Pin Holder Spring         |
| 3 Fore End                   | 29 Magazine Unload Latch              | 55 Square Nut                              | 81 Frontier Disassemble Pin Holder                |
| 4 Barrel                     | 30 29 Magazine Unload Latch Screw     | 56 Extractor Spring                        | 82 Frontier Disassemble Pin                       |
| 5 Grip                       | 31 Magazine Catch                     | 57 Extractor Pin                           | 83 Carrying Handle Screw                          |
| 6 Mechanism                  | 32 Magazine Unload Latch Spring       | 58 Cocking Lever Holder Ball Spring        | 84 Carrying Handle Nut                            |
| 7 Mechanism Lock             | 33 Hammer Spring                      | 59 Cocking Lever Holder Ball               | 85 Carrying Handle Side Cap                       |
| 8 Mechanism Lever            | 34 Hammer Pin                         | 60 Cocking Lever                           | 86 Front Sight Receiver                           |
| 9 Recoil Spring              | 35 Magazine                           | 61 Extractor                               | 87 Front Sight Latch                              |
| 10 Muzzle                    | 36 Magazine Follower                  | 62 Extractor Pin                           | 88 Front sight Pin                                |
| 11 Gas Piston                | 37 Magazine Spring                    | 63 Needle Holder                           | 89 Front Sight Revolving Rear Sight               |
| 12 Gas Piston                | 38 Magazine Base Plate Retainer       | 64 Needle                                  | 90 Carrying Handle Receiver                       |
| 13 Barrel Bushing            | 39 Magazine Base Plate                | 65 Needle Spring                           | 91 Carrying Handle Rear Sight                     |
| 14 Bearing Cap               | 40 Magazine Follower Catch Pin        | 66 Telescopic Stock Rail                   | 92 Carrying Handle Revolving Rear Sight           |
| 15 Hammer                    | 41 Magazine Follower Catch            | 67 Telescopic Stock Rubber                 | 93 Carrying Handle Side Adjustment Rear Sight     |
| 16 Trigger                   | 42 Magazine Follower Catch Spring     | 68 Telescopic Stock Latch                  |   |
| 17 Inner Trigger             | 43 Inner Trigger Spring               | 69 Telescopic Stock Cheek Piece            | 94 Carrying Handle Side Adjustment Rear Sight Pin |
| 18 Mechanism Holder          | 44 Grip Binding Screw                 | 70 Telescopic Stock Cheek Piece Left Slot  |   |
| 19 Mechanism Holder Receiver | 45 Grip Cap                           | 71 Telescopic Stock Cheek Piece Right Slot | 95 Carrying Handle Side Adjustment Rear Sight Nut |
| 20 Mechanism Holder Pin      | 46 Trigger Spring                     | 72 Telescopic Stock Cheek Piece Latch      |   |
| 21 Mechanism Holder Spring   | 47 Rear Disassemble Pin               | 73 Telescopic Stock Cheek Piece Screw      | 96 Carrying Handle Rear Sight Nut                 |
| 22 Safety                    | 48 Rear Disassemble Pin Holder        | 74 Telescopic Stock Cheek Piece Nut        | 97 Telescopic Stock Rubber Pin                    |
| 23 Safety Pin                | 49 Rear Disassemble Pin Holder Spring | 75 Telescopic Stock Receiver               | 98 Fore Sight Latch Spring                        |
| 24 Safety Spring             | 50 Pin Holder Propeller Screw         | 76 Telescopic Stock Latch Pin              | 99 Carrying Handle Revolving Rear Sight Pin       |
| 25 M5 Propeller Screw        | 51 Trigger Pin                        | 77 Telescopic Stock Adjustment Pin         | 100- Grip screw                                   |
| 26 Handguard Guide Pins      | 52 Handguard Screw                    | 78 Telescopic Stock Spring Pin             |   |



## K-12 DISASSEMBLY

**MANUFACTURER WARNING:** This hunting rifle you have purchased has been designed to work with ORIGINAL PARTS. YOU ARE RESPONSIBLE FOR THE COMPATIBILITY, SUITABLE ASSEMBLING AND NO REPLACEMENT OF THE PARTS YOU HAVE PURCHASED TO YOUR RIFLE. GUARANTEED BY OUR COMPANY ABOUT THE SAFETY AND EFFECTIVE WORK OF YOUR WEAPON, ONLY REPLACES WHICH IS THE PARTS PRODUCED IN OUR FACTORY WHEN MAKING CHANGE ON THE Rifle. GUARANTEE ABOUT THE SAFETY AND EFFECTIVE WORK OF YOUR FIREARM, COMPRISE ONLY REPLACEMENTS WHICH PARTS PRODUCED IN OUR FACTORY. THE OWNER IS TOTALLY RESPONSIBLE FOR THE ASSEMBLY OF THE FIREARM AND THE WORK OF THE FIREARM AFTER UNAUTHORIZED PERSON'S DISASSEMBLY THE WEAPON OR AFTER PARTS REPLACEMENT.

**IMPORTANT WARNING:** BEFORE YOU DISASSEMBLY THE FIREARM 1) POINT YOUR FIREARM TO THE SAFE DIRECTION 2) MAKE SURE THAT THE MAGAZINE IS PULLED OFF 3) MAKE SURE THAT CHAMBER IS EMPTY



1)



2)



3)



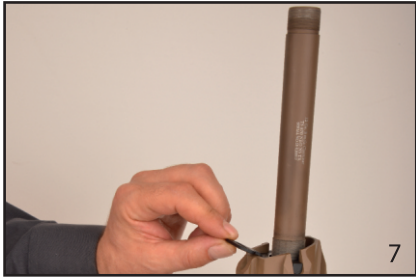
4)



5)



6)



7)



8)



9)



10)



11)



12)



13)

**IMPORTANT WARNING: BEFORE YOU START CLEANING YOUR WEAPON, MAKE SURE THAT THE WEAPON IS EMPTY AND POINTED IN A SAFE DIRECTION**

**Lubrication Warning: SHOOTING WITH THE FIREARM WHICH IS WHOLE OR PARTIALLY CLOSED BECAUSE OF OIL OR DIRTY MATERIALS, MAY CAUSE INJURIES FOR OTHER PEOPLE OR IT CAN DAMAGE TO THE FIREARM. BEFORE SHOOTING, MAKE SURE THAT INSIDE OF THE BARREL AND CHAMBER IS DRY. ALSO MAKE SURE THAT NOT PLUGGED WITH ANY MATERIALS. DO NOT LUBRICATE THE CARTRIDGES. FIRING A CARTRIDGE WHEN THE BARREL IS PLUGGED CAN DAMAGE TO THE FIREARM AND MAY CAUSE DEATHS AND INJURIES. MAKE SURE THE OIL IS SUITABLE AND USE NOT MUCH IN LUBRICATION. DO NOT FORGET THAT YOU ARE RESPONSIBLE FOR THE MAINTENANCE AND STORAGE OF YOUR WEAPON**

1. Step: Disassemble your firearm
2. Step: To clean the firearm, string a dampened with solvent rag to proper rod and move it backwards and forwards in barrel multiple times. Repeat the same process with a dry rag to clean oil and dirt residues that may stay in the barrel.
3. Step: If the dirt is not cleaned by the rag description in step 2. Do the same process with brass plated slush brush which is dampened with solvent. Repeat step 2 if dirt cleared away.
4. Step: Wipe slightly that mechanism carrier, empty cartridge thrower and Aluminium receiver insider parts with thin numbered oil.
5. Step: Assemble the firearm and wipe the metallic exterior surfaces with low oiled rag. If You will not use the firearm for a long time, wipe the barrel with a low oiled rag.
6. Step: Keep your firearm in a safe, locked place that cannot be used by other individuals or unauthorized person. Never store your firearm in a leather sheath because leather sheath will absorb oil.



For international dealers please visit:  
[www.kralarms.com](http://www.kralarms.com)

Follow Us on:

